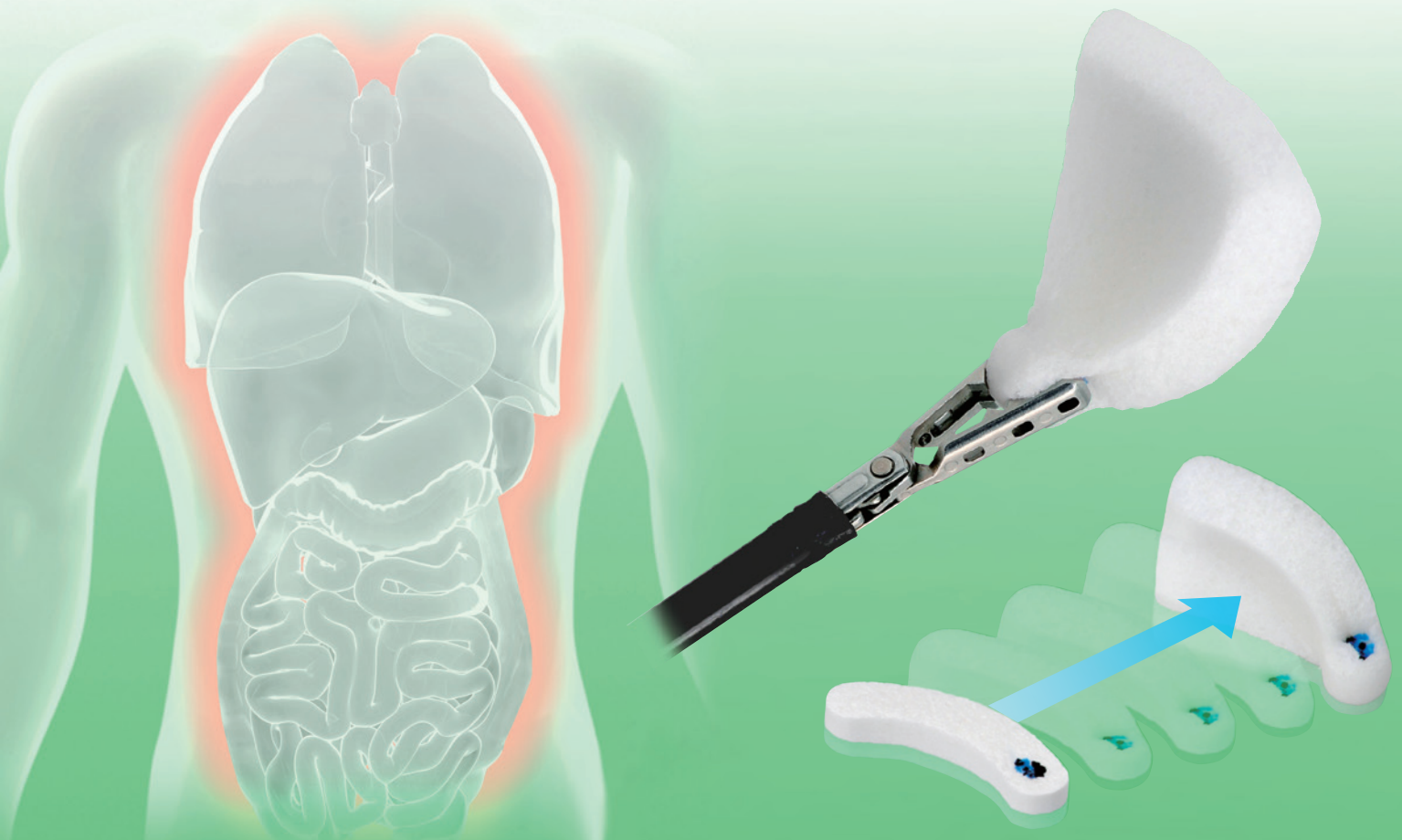


# ENDOSUPPORT™

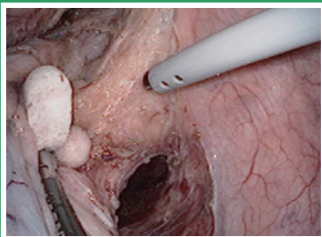
*A Useful Laparoscopic Sponge for Protection of Organs*



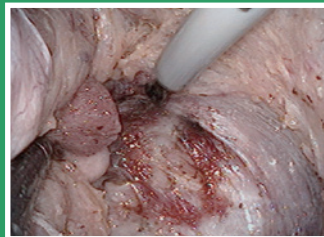
- \*Support soft and gentle retraction*
- \*Reduce the risk of damage to internal-organs*

**Example of use**

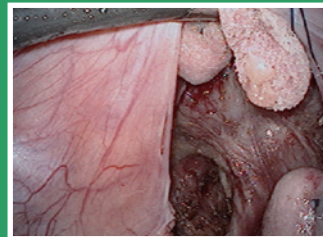
*\*Laparoscopic Low Anterior Resection*



for right lateral ligament processing



for astringent



for retraction of prostate by assistant surgeon

*\*Laparoscopic Assisted Distal Gastrectomy*



for gentle retraction of pancreas

## Features

- Soft and gentle material to organs (Help to reduce the risk of damage to internal-organs.)
- Enable to push organs firmly (Internal organs can be firmly pressed down for the material on which it is hard to slide.) (Enable longer time retraction and support continuous dissection.)
- Unique arched shape (Easy to grasp by forceps and fit to organs such as rectal wall, prostate etc.)
- Easy to insert & remove it through over 12mm trocar
- X-ray detectable (reduce the risk of internal residue.)

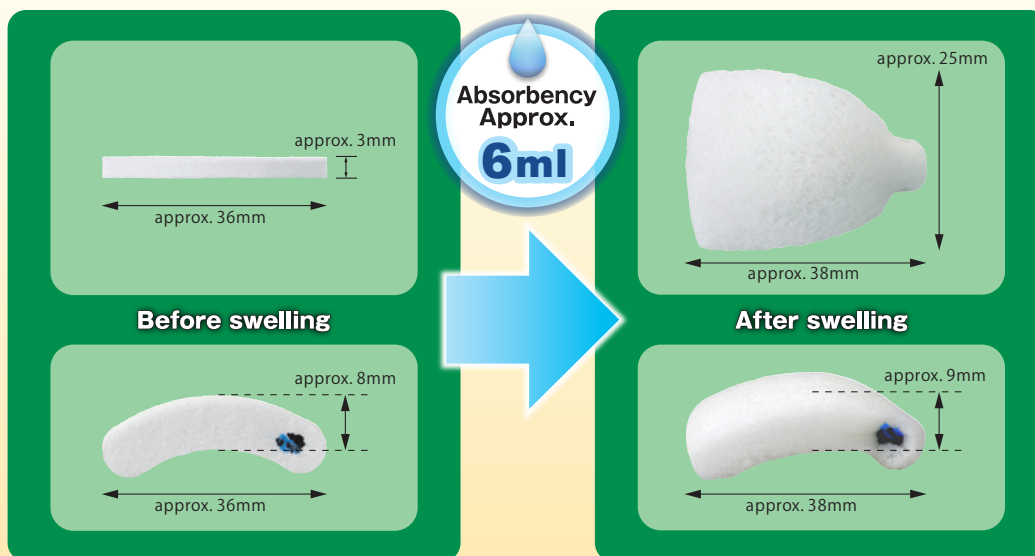


## How to use

- 1 Insert **ENDOSUPPORT™** from a trocar with diameter not less than 12mm.
- 2 Swell **ENDOSUPPORT™** by spraying physiological saline.
- 3 **ENDOSUPPORT™** is used for the following purposes in a laparoscopic surgery.
  - \* Protection of the organs at displacement of the organs
  - \* Absorption of fluids such as blood and body fluid
  - \* Astriction
- 4 Remove **ENDOSUPPORT™** from the body cavity.



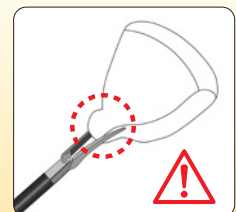
## Specifications



Material : Sponge (Cellulose 100%), X ray detectable agent (Polypropylene, Polyester, Barium Sulfate, Blue pigment)

## Precautions

- When remove the product, hold the part indicated in the figure and remove it through over 12mm trocar or incision carefully not to cause any breaks of the product.
- Do not attempt to cut or process the product before or during the use.
- Do not leave the product in the body.



Code No.	Product Name	Packing
088-480030	ENDOSUPPORT	1 pc/pack, 15 packs/box 2 boxes/carton

**MADE IN JAPAN**

## KAWAMOTO CORPORATION

6-4 TANIMACHI 2-CHOME, CHUOKU OSAKA 540-0012, JAPAN. TEL : 81-6-6943-8991 FAX : 81-6-6943-9081  
<https://www.kawamoto-sangyo.co.jp> E-mail : [kbm@kawamoto-sangyo.co.jp](mailto:kbm@kawamoto-sangyo.co.jp)