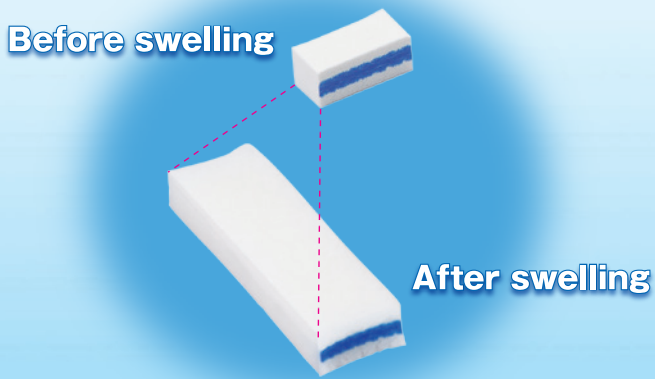


KAIMEN™

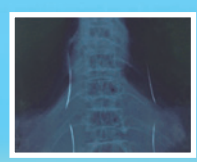
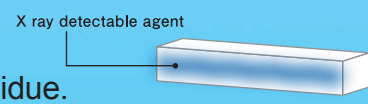
High Absorbent Sponge specially for Laparoscopic surgery.

| | | | | |
|----------------|------|------|------|------|
| KBM since 1914 | | | | |
| KAIMEN™ | | | | |
| Size | 2cm | 3cm | 4cm | 5cm |
| Weight | 0.5g | 0.8g | 1.1g | 1.4g |
| Absorbency | 13mL | 19mL | 26mL | 32mL |

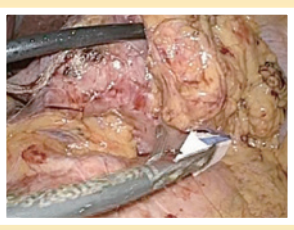


Features

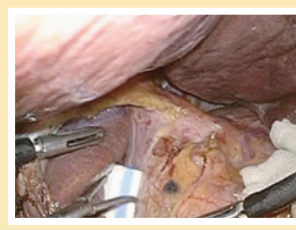
- Support to secure dry surgical field by its superior absorbency**
 Promptly absorb blood, lymph fluid etc. by simply leaving the sponge on the site.
 Reduce stress of surgeons by providing clear surgical field.
- 4 sizes assorted pack**
 Assort of 2 / 3 / 4 / 5cm pack for appropriate case and site of the patient.
- X-ray detectable**
 Reduce the risk of sponge loss & internal residue.



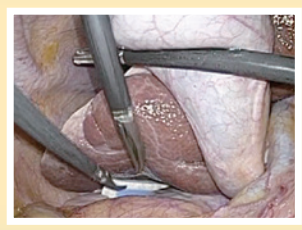
【Example of use by Laparoscopic Assisted Distal Gastrectomy】



Gastric Corpus dorsal



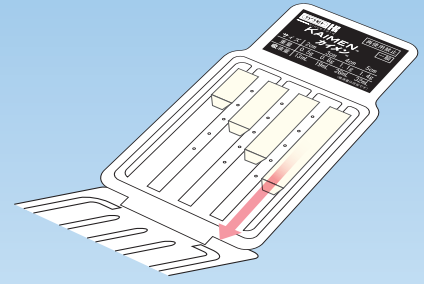
Caudate lobe of liver dorsal



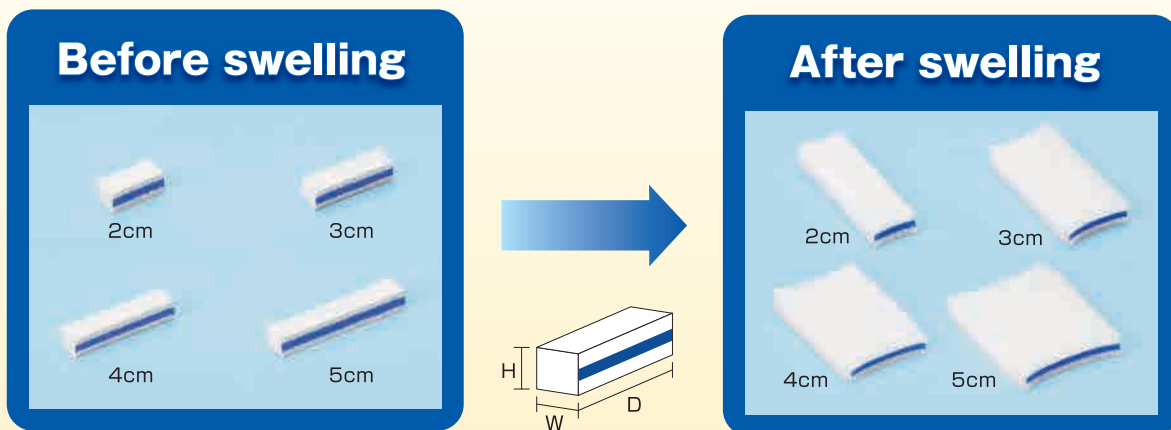
Morison's pouch (hepatorenal recess)

How to use

- 1 Take the product out from the plastic case.
- 2 Insert the product into body cavity through trocar over 12mm dia.
- 3 Set the product in appropriate part without making it swell and use for absorption of liquids such as blood, body fluid etc.
- 4 When the product is pulled out from the body cavity, pull it out from an incision part secured 2 to 3cm or more, with care to prevent it from being fractured.



Specifications



Material : Sponge (Cellulose 100%), X ray detectable agent (Polypropylene, Polyester, Barium Sulfate, Blue pigment)

| Size | Before swelling (H×W×D) | After swelling (H×W×D) | Absorbency Approx. |
|------|-------------------------|------------------------|--------------------|
| 2 cm | 8 × 8 × 20 mm | 8 × 75 × 20 mm | 13 mL |
| 3 cm | 8 × 8 × 30 mm | 8 × 75 × 30 mm | 19 mL |
| 4 cm | 8 × 8 × 40 mm | 8 × 75 × 40 mm | 26 mL |
| 5 cm | 8 × 8 × 50 mm | 8 × 75 × 50 mm | 32 mL |

| Code No. | Product Name | Packing |
|------------|--------------|--|
| 088-650310 | KAIMEN | 1set / pack, 6packs / box, 2boxes / carton |

MADE IN JAPAN

KAWAMOTO CORPORATION

6-4 TANIMACHI 2-CHOME, CHUOKU OSAKA 540-0012, JAPAN. TEL : 81-6-6943-8991 FAX : 81-6-6943-9081
<https://www.kawamoto-sangyo.co.jp> E-mail : kbm@kawamoto-sangyo.co.jp